

Know the Basics

Hello	konnichiwa	こんにちは
Good morning	ohayou	おはよう
Good evening	konbanwa	こんばんは
Please	kudasai	ください
Thank you	arigatou	ありがとう
Yes	hai	はい
No	iie	いいえ
Excuse me	sumimasen	すみません
Goodbye	sayounara	さようなら

Mind your Manners



Japanese people bow a lot! You should bow when greeting, thanking or saying goodbye. Bow from your waist and look down in front of you. The deeper you bow the more respectful it is.

When saying someone else's name, always add 'san' after to be polite e.g. Anna san. You should not do this with your own name.

You must take your shoes off when entering a house and even some restaurants - so always wear nice socks!

Don't talk on the phone or eat on public transport.

Days of the Week

Monday	(getsuyoubi)	げつようび
Tuesday	(kayoubi)	かようび
Wednesday	(suibiyoubi)	すいようび
Thursday	(mokuyoubi)	もくようび
Friday	(kingyoubi)	きんようび
Saturday	(doyoubi)	どようび
Sunday	(nichiyoubi)	にちようび

Famous Landmarks

Shibuya Crossing (Tokyo)



One of the busiest pedestrian crossings in the world, Shibuya crossing is the most iconic symbol of the city of Tokyo.

Doutonbori (Osaka)



An area surrounding Dotonbori Canal and Dotonbori Street is one of the most colourful areas in Osaka and an absolute must-visit location when traveling through Kansai region.

Fushimi Inari Taisha (Kyoto)

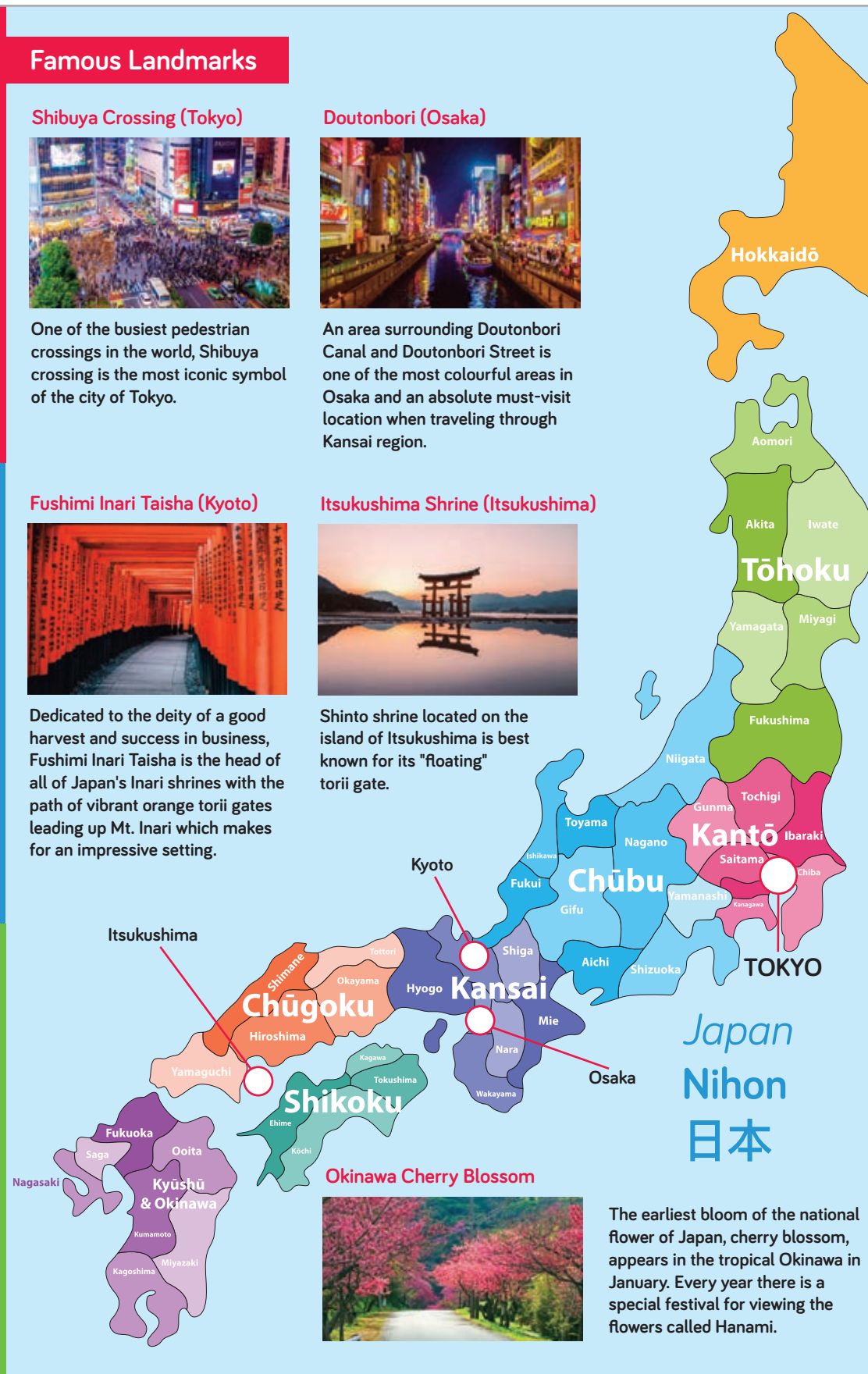


Dedicated to the deity of a good harvest and success in business, Fushimi Inari Taisha is the head of all of Japan's Inari shrines with the path of vibrant orange torii gates leading up Mt. Inari which makes for an impressive setting.

Itsukushima Shrine (Itsukushima)



Shinto shrine located on the island of Itsukushima is best known for its "floating" torii gate.



Okinawa Cherry Blossom

The earliest bloom of the national flower of Japan, cherry blossom, appears in the tropical Okinawa in January. Every year there is a special festival for viewing the flowers called Hanami.

Chopstick Etiquette

You should not use your chopsticks to point or skewer food. It is considered very poor manners to do so.

You should not stick your chopsticks upright in your bowl of food as this is only done at funerals.



Express Yourself

Wow	sugoi	すごい
Cool	kakkoi	かっこいい
Delicious	oishii	おいしい
Fun	tanoshii	楽しい
Hot	atsui	あつい
Good	ii	いい
Interesting	omoshiroi	おもしろい
Cute	kawaii	かわいい

Emojis originated in Japan. Emoji means picture + character (絵文字 = 絵(e) + 文字(moji))

Say **はい Hai** to Japanese



Feeling Peckish?

To show gratitude before eating, you should say:

itadakimasu いただきます

To show appreciation to your host after eating, you should say:

gochisousama ごちそうさま

Cheers!

kanpai かんぱい



Sushi

The most common sushi is nigirizushi: fish (mostly raw) that is placed on top of a small portion of sushi rice. Other toppings include egg and meat. Makizushi is seaweed and rice rolled around fish and/or vegetables.



Ramen

Different regions have their own specialty ramen but it usually includes ramen noodles, broth, pork, a hard-boiled egg and finely chopped green onions. It is OK to slurp your noodles in Japan.



Takoyaki

Takoyaki is a great example of Japanese street food which is often eaten at festivals. They are balls made from batter and filled with small pieces of chopped octopus, topped with a rich sauce and fish flakes.



Miso Soup

Miso soup is a staple Japanese food which some people have with nearly every meal. Made from fermented soya beans, it is a salty soup to which tofu and seaweed are usually added.



Okonomiyaki

Okonomiyaki is a savoury pancake made from shredded cabbage, meat of your choice and topped with rich brown sauce, mayo, fish flakes and a sprinkling of seaweed powder. Americans refer to it as Japanese Pizza.



Onigiri

Onigiri is a rice ball wrapped in seaweed with flavoursome fillings like tuna & mayo, salted salmon, pickled plum or shrimp & mayo. It is known as the Japanese Sandwich because of its size and convenience.

Writing in Japanese

Japanese is written using a combination of 4 different types of characters:

Kanji, Hiragana, Katakana and Romaji

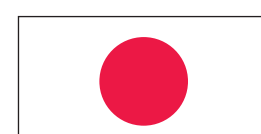
Kanji

Kanji are characters that were adapted from Chinese and sometimes look like what they mean. Figure out what the Kanji below mean based on what they look like and write in your answer under each image.



The two Kanji characters that make up the word for Japan (nihon) are 'sun' and 'origin'. Hence the Land of the Rising Sun.

日本



Hiragana

Hiragana is a set of 46 characters, each character representing a different sound.

Practice writing the word 'Hello' in Hiragana:

こんにちは
ko ni chi wa



Practice writing the word 'Thanks' in Hiragana:

ありがとう
a ri ga to u



Katakana Game

Katakana also has 46 characters which represent different sounds. It mainly used to write words borrowed from other languages like names of places, people or new technologies and hobbies. Figure out these hobbies (swimming, tennis, football & basketball) on what they sound like and write them in English.

Ba su ketto bō ru	バスケットボール	-----
Futto bō ru	フットボール	-----
Suu imin gu	スイミング	-----
Te ni su	テニス	-----



Japanese Words You Already Know

There are lots of Japanese words that you already know. Read the descriptions and see if you can find them in the word search.

H	O	N	C	H	O	K	I	R	T	S	U	O
C	H	W	E	A	O	T	F	S	S	O	F	R
G	K	U	T	Y	C	O	O	N	U	K	U	I
R	A	T	H	I	B	F	T	S	K	M	T	T
I	R	Z	F	J	E	U	H	I	O	E	O	E
C	A	O	G	E	T	A	B	A	D	F	N	Z
K	O	R	I	G	A	M	I	R	U	U	R	T
S	K	S	O	M	R	D	P	W	S	T	I	Y
H	E	Y	D	N	A	G	N	E	R	K	M	P
A	J	P	I	O	K	E	R	I	D	A	U	H
W	T	S	U	N	A	M	I	C	N	R	N	O
M	U	D	S	A	K	O	P	I	A	J	H	O
Z	E	N	A	W	E	M	O	J	I	U	A	N

- A small image expressing an emotion/idea
- Singing along to music as the lyrics appear on a screen
- Folding paper into different objects
- Heavyweight wrestling where the wrestlers can weigh up to 150kg
- A wealthy, powerful person, "a business t_ _ _n"
- A Japanese mattress used on the floor and folded up during the day
- A famous Japanese martial art
- A two wheeled passenger cart drawn by a person or bike. You can often see them on Grafton street!
- A soft white food made from soya curd
- Tropical storm also referred to as a twister
- The person in charge, "head h_ _ _o"
- Martial arts master trained in espionage
- A popular nine number puzzle
- A large sea wave caused by an earthquake
- The Buddhist concept of being in a state of peace

Romaji

Romaji is used to help people who are only familiar with the Roman alphabet (a,b,c...) to understand Japanese pronunciation e.g. arigatou.

Numbers

1	ichi	一
2	ni	二
3	san	三
4	shi	四
5	go	五
6	roku	六
7	shichi	七
8	hachi	八
9	kyuu	九
10	jyuu	十

Although numbers have their own Kanji characters, Arabic numerals (1,2,3...) are usually used instead nowadays.



Languages Connect promotes the many advantages of learning foreign languages - making new friends, learning about new cultures and places, finding more interesting jobs, and lots more.

Knowing a foreign language is fun and it opens your mind to the wider world. Right now in Ireland, foreign language skills are more important than ever - we need to keep connecting with new and exciting global opportunities.

You'll find information about bringing languages to life, events, advice from industry experts, real-life stories of Irish people who use languages in their careers every day, and lots more on

languagesconnect.ie

For exciting competitions and language learning tips follow us on:

- Facebook LanguagesConnect.ie
- Instagram LanguagesConnect
- Twitter @langconnect_ie
- Youtube youtube.com/languagesconnect

